



SANATOGA RIDGE  
COMMUNITY

Prices Effective 2-14-18

Gardens

# LONGWOOD II

## 2 Bedroom, 1 Bathroom

(1<sup>st</sup> or 2<sup>nd</sup> Floor)

**All Homes Include:**  
Refrigerator, Stove, Microwave, Dishwasher,  
Garbage Disposal, Washer, Dryer

### Entry Fee:

NOTE: Prices are 75% Refundable Upon Sale of the Home

**\$131,000 1<sup>st</sup> Floor**

**\$138,500 2<sup>nd</sup> Floor**

(Price variation dependent upon ½ bath)

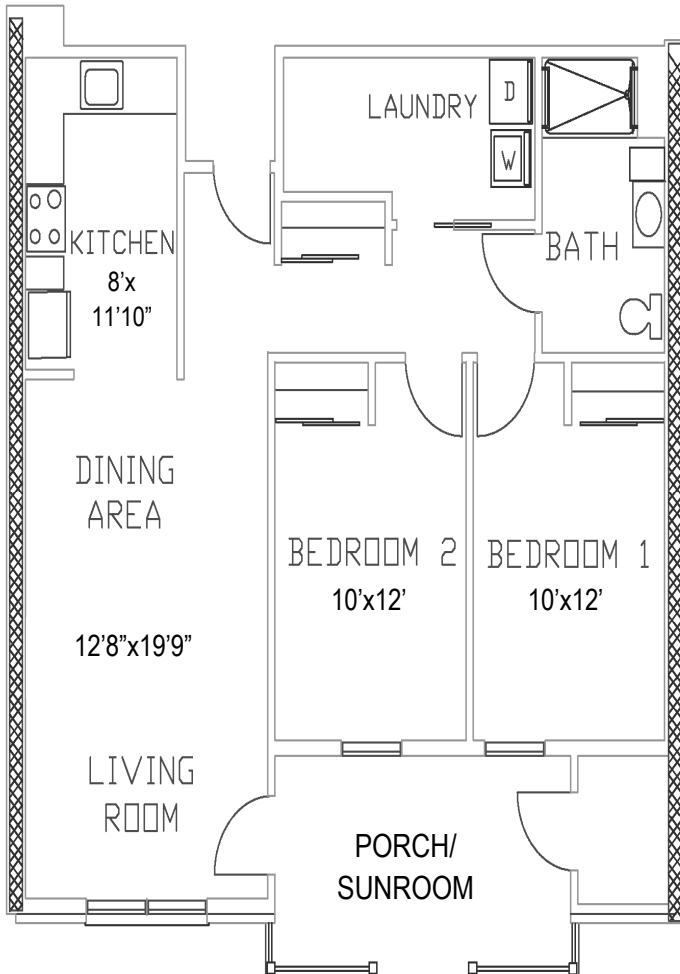
### 1<sup>st</sup> Person Monthly Service Fee of \$836 Includes:

(Additional \$170 for 2<sup>nd</sup> Person)

NOTE: Monthly Service Fee terminates when home is no longer occupied and returned for resale.

- Property Taxes
- Property Insurance
- Water/Sewer
- All Maintenance (Inside/Outside and Appliances)
- All Landscaping
- All Snow Removal
- Trash/Recycle
- Emergency 1<sup>st</sup> Response System

NOTE: Floor plans shown are not to scale and indicate approximate square footage



2461 E. High St., Pottstown, PA 19464 | Phone: 610.326.6282 | Fax: 610.326.3142  
SanatogaRidge.com