



Cottage

# CHATEAU

## 1 Bedroom, 1 Bathroom

### All Homes Include:

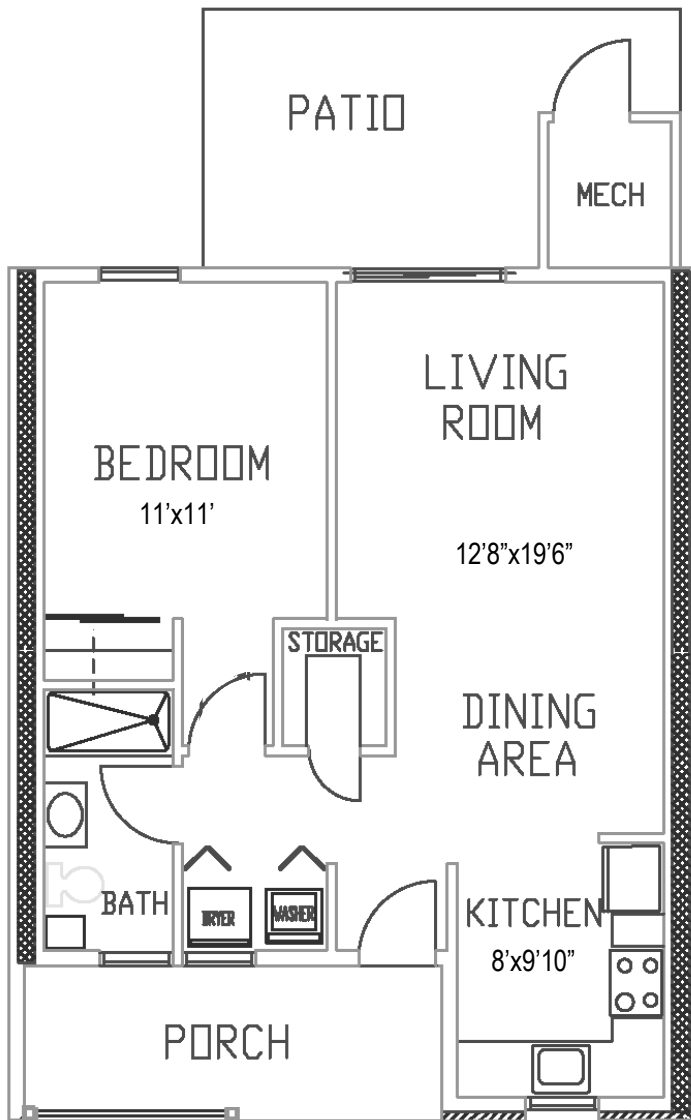
Refrigerator, Stove, Microwave, Dishwasher,  
Garbage Disposal, Washer, Dryer

### Entry Fee:

*NOTE: Prices are 75% Refundable Upon Sale of the Home*

**\$124,000 to \$130,000**

*(Price variation dependent upon patio enclosure)*



### 1<sup>st</sup> Person Monthly Service Fee\* of \$713 Includes:

*(Additional \$175 for 2<sup>nd</sup> Person)*

*NOTE: Monthly Service Fee terminates when home is no longer occupied and returned for resale.*

- Property Taxes
- Property Insurance
- Water/Sewer
- All Maintenance (Inside/Outside and Appliances)
- All Landscaping
- All Snow Removal
- Trash/Recycle
- Emergency 1<sup>st</sup> Response System

\*2-5-19

*NOTE: Floor plans shown are not to scale and indicate approximate square footage*

2461 E. High St., Pottstown, PA 19464 | Phone: 610.326.6282 | Fax: 610.326.3142  
[SanatogaRidge.com](http://SanatogaRidge.com)