



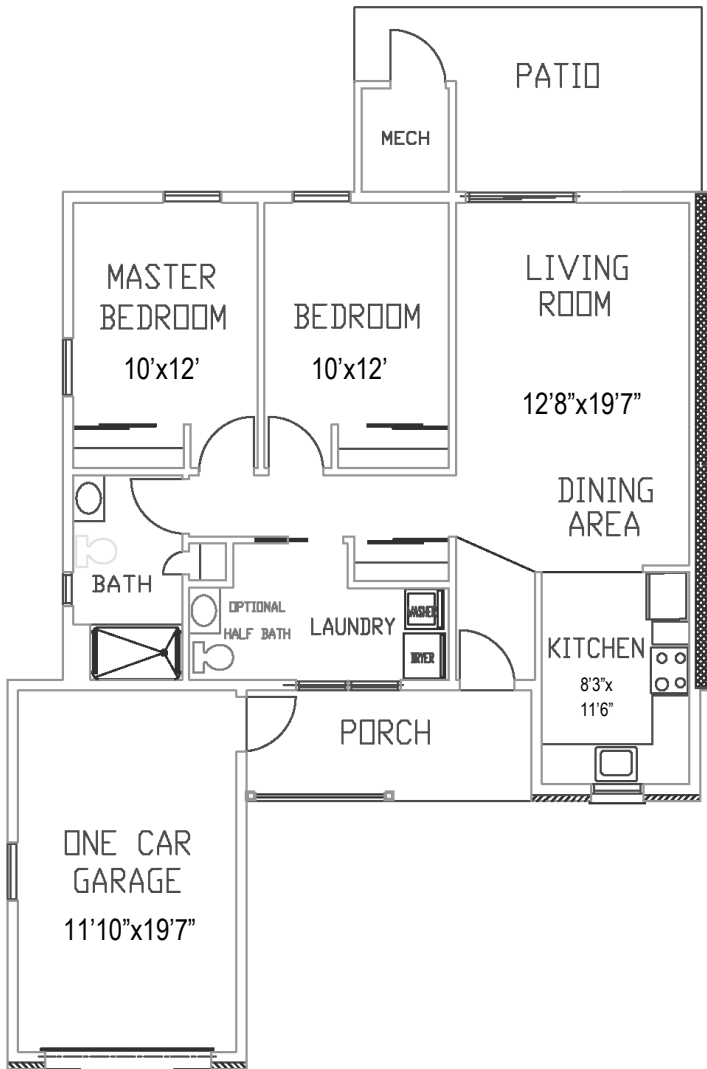
SANATOGA RIDGE
COMMUNITY

Cottage

CREST

2 Bedroom, 1 Bathroom

(Shown with Garage and Optional 1/2 Bath)



NOTE: Floor plans shown are not to scale and indicate approximate square footage

(Living Space 980 SF, Garage 230 SF)

All Homes Include:

Refrigerator, Stove, Microwave, Dishwasher, Garbage Disposal, Washer, Dryer

Entry Fee:

NOTE: Prices are 75% Refundable Upon Sale of the Home

\$148,000 to \$173,500

Homes with Garage, add \$17,000

(Price variation dependent upon patio enclosure, extra patio, 1/2 bath, garage, single home)

1st Person Monthly Service Fee* of \$887 Includes:

(Additional \$180 for 2nd Person)

NOTE: Monthly Service Fee terminates when home is no longer occupied and returned for resale.

- Property Taxes
- Property Insurance
- Water/Sewer
- All Maintenance (Inside/Outside and Appliances)
- All Landscaping
- All Snow Removal
- Trash/Recycle
- Emergency 1st Response System

All homes have forced air/natural gas heat w/central air system. Resident is responsible for utilities (heat, electric, cable, internet, & phone).

We encourage all residents to carry content insurance, e.g., tv, furniture, jewelry, etc.

2461 E. High St., Pottstown, PA 19464 | Phone: 610.326.6282 | Fax: 610.326.3142

SanatogaRidge.com | Find us on [f](#) [Linkedin](#)

*02-05-20