



SANATOGA RIDGE  
COMMUNITY

Gardens

# LONGWOOD

## 1 Bedroom, 1 Bathroom

(1<sup>st</sup> or 2<sup>nd</sup> Floor)

### All Homes Include:

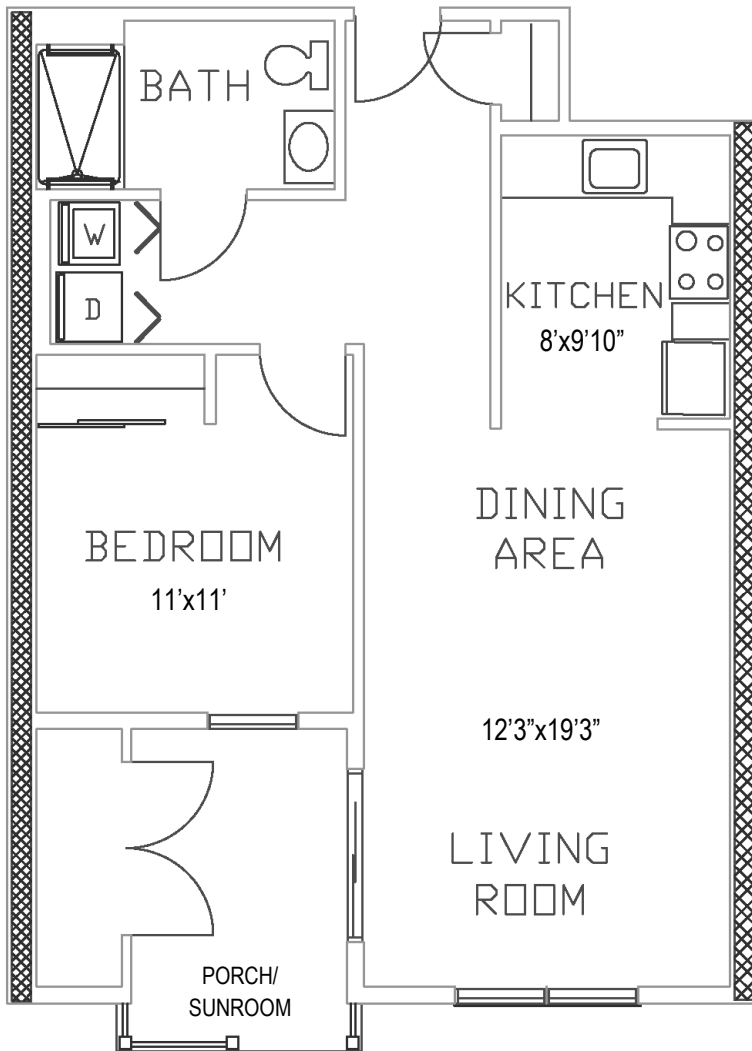
Refrigerator, Stove, Microwave, Dishwasher,  
Garbage Disposal, Washer, Dryer

### Entry Fee:

NOTE: Prices are 75% Refundable Upon Sale of the Home

\$112,000 1<sup>st</sup> Floor

\$115,000 2<sup>nd</sup> Floor



NOTE: Floor plans shown are not to scale and indicate approximate square footage

(Living Space 680 SF)

### 1<sup>st</sup> Person Monthly Service Fee\* of \$734 Includes:

(Additional \$180 for 2<sup>nd</sup> Person)

NOTE: Monthly Service Fee terminates when home is no longer occupied and returned for resale.

- Property Taxes
- Property Insurance
- Water/Sewer
- All Maintenance (Inside/Outside and Appliances)
- All Landscaping
- All Snow Removal
- Trash/Recycle
- Emergency 1<sup>st</sup> Response System

All homes have forced air/natural gas heat w/central air system. Resident is responsible for utilities (heat, electric, cable, internet, & phone).

We encourage all residents to carry content insurance, e.g., tv, furniture, jewelry, etc.

2461 E. High St., Pottstown, PA 19464 | Phone: 610.326.6282 | Fax: 610.326.3142

SanatogaRidge.com | Find us on [f](#) [LinkedIn](#)

\*02-05-20