

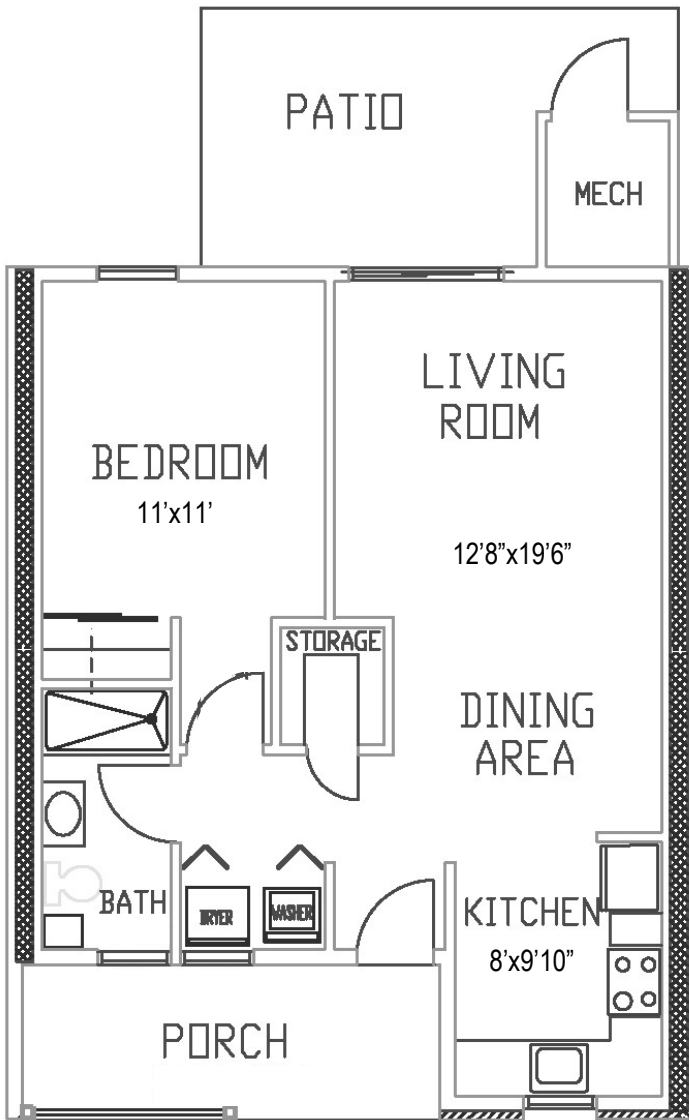
Cottage



SANATOGA RIDGE  
COMMUNITY

# CHATEAU

## 1 Bedroom, 1 Bathroom



Floor plans shown are not to scale  
and indicate approximate square footage

*(Living Space 730 SF)*

### Appliances Included:

Refrigerator, Stove, Microwave, Dishwasher,  
Garbage Disposal, Washer, Dryer

### Updated Options:

Flooring, Carpeting, Lighting, Hardware,  
Countertop, Backsplash

### Entry Fee:

*75% Refund at Resale*

## Starting at \$156,300

Upgraded features on reverse side

### Monthly

### Maintenance & Service Fee includes:

- 24/7 On-Call Maintenance
- Property and School Taxes
- Property Insurance
- Maintenance  
(Inside, Outside, and Appliances)
- Water/Sewer
- Trash/Recycling
- Landscaping
- Snow Removal

1 Resident: \$794

2 Residents: \$988

*Fee ends when home is returned for resale.*

- Homes have forced air/natural gas heat and central air.
- Resident is responsible for utilities (heat, electric, cable, internet, & phone).
- Resident is encouraged to carry content insurance for possessions; i.e.: tv, furniture, jewelry, etc.

\*05-16-2022

2461 E. High St., Pottstown, PA 19464 | Phone: 610.326.6282 | Fax: 610.326.3142

SanatogaRidge.com | Find us on YouTube



**Upgraded Features: Chateau**

Patio Enclosure	\$5,200
Patio Enclosure with Heat & Air	\$7,800

Upgraded features vary by home.

# NOTES