

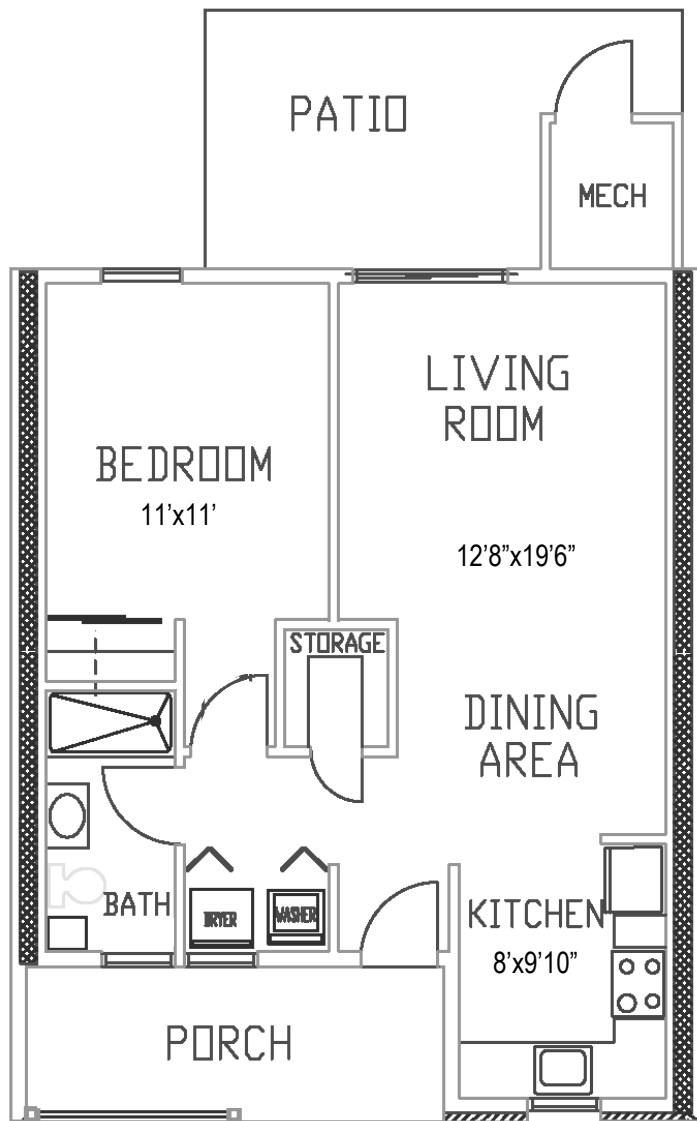
Cottage



SANATOGA RIDGE
COMMUNITY

CHATEAU

1 Bedroom, 1 Bathroom



Floor plans shown are not to scale
and indicate approximate square footage

(Living Space 730 SF)

Appliances Included:

Refrigerator, Stove, Microwave, Dishwasher,
Garbage Disposal, Washer, Dryer

Updated Options:

Flooring, Carpeting, Lighting, Hardware,
Countertop, Backsplash

Entry Fee:

75% Refund at Resale

Starting at \$156,300

Upgraded features on reverse side

Monthly Maintenance & Service Fee includes:

- 24/7 On-Call Maintenance
- Property and School Taxes
- Property Insurance
- Maintenance
(Inside, Outside, and Appliances)
- Water/Sewer
- Trash/Recycling
- Landscaping
- Snow Removal

1 Resident: \$850

2 Residents: \$1,058

Fee ends when home is returned for resale.

- Homes have forced air/natural gas heat and central air.
- Resident is responsible for utilities (heat, electric, cable, internet, & phone).
- Resident is encouraged to carry content insurance for possessions; i.e.: tv, furniture, jewelry, etc.



Upgraded Features: Chateau

Patio Enclosure	\$5,200
Patio Enclosure with Heat & Air	\$7,800

Upgraded features vary by home.

NOTES