

Cottage

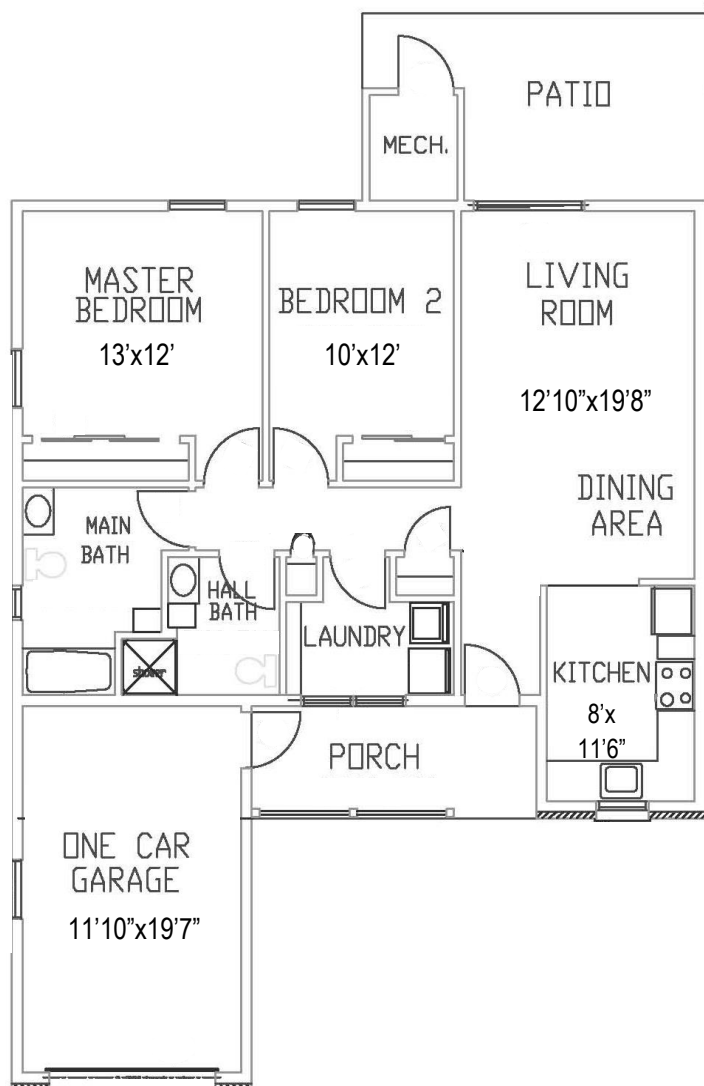


SANATOGA RIDGE
COMMUNITY

EXTENDED CREST

2 Bedroom, 1 1/2 - 2 Bathroom

(Shown with Garage)



Floor plans shown are not to scale
and indicate approximate square footage

(Living Space 1100 SF Garage 230 SF)

Appliances Included:

Refrigerator, Stove, Microwave, Dishwasher,
Garbage Disposal, Washer, Dryer

Updated Options:

Flooring, Carpeting, Lighting, Hardware,
Countertop, Backsplash

Entry Fee:

75% Refund at Resale

Starting at \$223,600

(with one garage)

Upgraded features on reverse side

Monthly Maintenance & Service Fee includes:

- 24/7 On-Call Maintenance
- Property and School Taxes
- Property Insurance
- Maintenance
(Inside, Outside, and Appliances)
- Water/Sewer
- Trash/Recycling
- Landscaping
- Snow Removal

1 Resident: \$1,027

2 Residents: \$1,235

Fee ends when home is returned for resale.

- Homes have forced air/natural gas heat and central air.
- Resident is responsible for utilities (heat, electric, cable, internet, & phone).
- Resident is encouraged to carry content insurance for possessions; i.e.: tv, furniture, jewelry, etc.

*02-02-2023

2461 E. High St., Pottstown, PA 19464 | Phone: 610.326.6282 | Fax: 610.326.3142

SanatogaRidge.com | Find us on   YouTube



Upgraded Features: Extended Crest

Second garage	\$22,000
Extra full bath	\$ 4,600
Extra half bath	\$ 3,300
Patio Enclosure	\$ 5,200
Patio Enclosure with Heat & Air	\$ 7,800
4-Season Sunroom Addition	\$20,000
Extra patio	\$ 2,000
Single home	\$13,000

Upgraded features vary by home.

NOTES