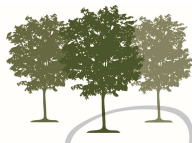


Garden
Apartment

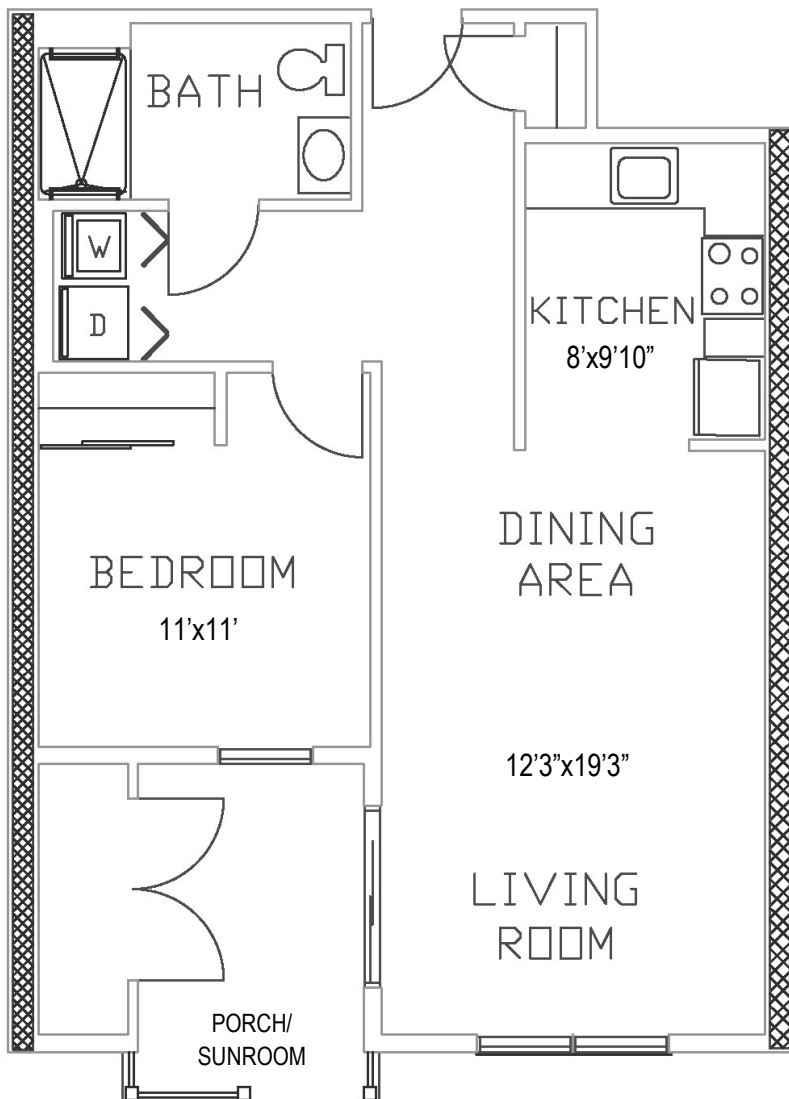


SANATOGA RIDGE
COMMUNITY

LONGWOOD

1 Bedroom, 1 Bathroom

(1st or 2nd Floor)



Floor plans shown are not to scale
and indicate approximate square footage

(Living Space 680 SF)

Appliances Included:

Refrigerator, Stove, Microwave, Dishwasher,
Garbage Disposal, Washer, Dryer

Updated Options:

Flooring, Carpeting, Lighting, Hardware,
Countertop, Backsplash

Entry Fee:

75% Refund at Resale

\$141,200 1st Floor (porch)

\$144,900 2nd Floor (sunroom)

Monthly Maintenance & Service Fee includes:

- 24/7 On-Call Maintenance
- Property and School Taxes
- Property Insurance
- Maintenance
(Inside, Outside, and Appliances)
- Water/Sewer
- Trash/Recycling
- Landscaping
- Snow Removal

1 Resident: \$910

2 Residents: \$1,133

Fee ends when home is returned for resale.

- Homes have forced air/natural gas heat and central air.
- Resident is responsible for utilities (heat, electric, cable, internet, & phone).
- Resident is encouraged to carry content insurance for possessions; i.e.: tv, furniture, jewelry, etc.



NOTES