

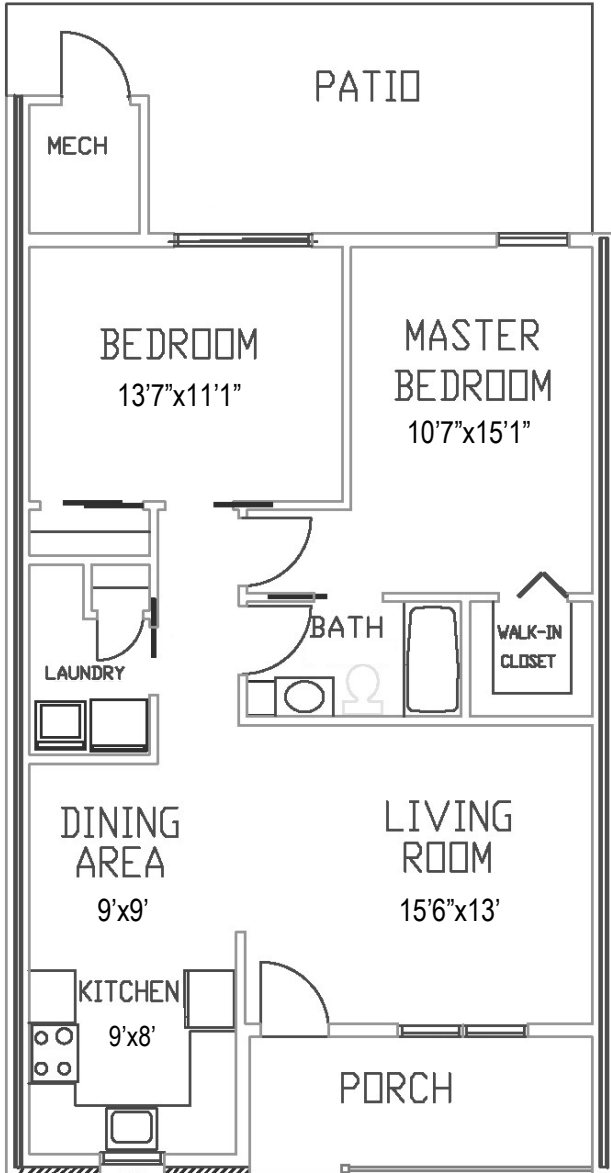
Cottage



SANATOGA RIDGE
COMMUNITY

HIGHLAND II

2 Bedroom, 1 Bathroom



Floor plans shown are not to scale
and indicate approximate square footage

(Living Space 870 SF, Garage 230 SF)

Appliances Included:

Refrigerator, Stove, Microwave, Dishwasher,
Garbage Disposal, Washer, Dryer

Updated Options:

Flooring, Carpeting, Lighting, Hardware,
Countertop, Backsplash

Entry Fee:

75% Refund at Resale

Starting at \$186,700

Upgraded features on reverse side

Monthly Maintenance & Service Fee includes:

- 24/7 On-Call Maintenance
- Property and School Taxes
- Property Insurance
- Maintenance
(Inside, Outside, and Appliances)
- Water/Sewer
- Trash/Recycling
- Landscaping
- Snow Removal

1 Resident: \$1,350

2 Residents: \$1,580

Fee ends when home is returned for resale.

- Homes have forced air/natural gas heat and central air.
- Resident is responsible for utilities (heat, electric, cable, internet, & phone).
- Resident is encouraged to carry content insurance for possessions; i.e.: tv, furniture, jewelry, etc.

*09-25-2024

2461 E. High St., Pottstown, PA 19464 | Phone: 610.326.6282 | Fax: 610.326.3142

SanatogaRidge.com | Find us on



Upgraded Features: Highland II

| | |
|---------------------------------|----------|
| Garage | \$22,000 |
| Extra half bath | \$ 3,300 |
| Patio Enclosure | \$ 5,200 |
| Patio Enclosure with Heat & Air | \$ 7,800 |
| 4-Season Sunroom Addition | \$20,000 |
| Extra patio | \$ 2,000 |
| Single home | \$13,000 |

Upgraded features vary by home

NOTES