

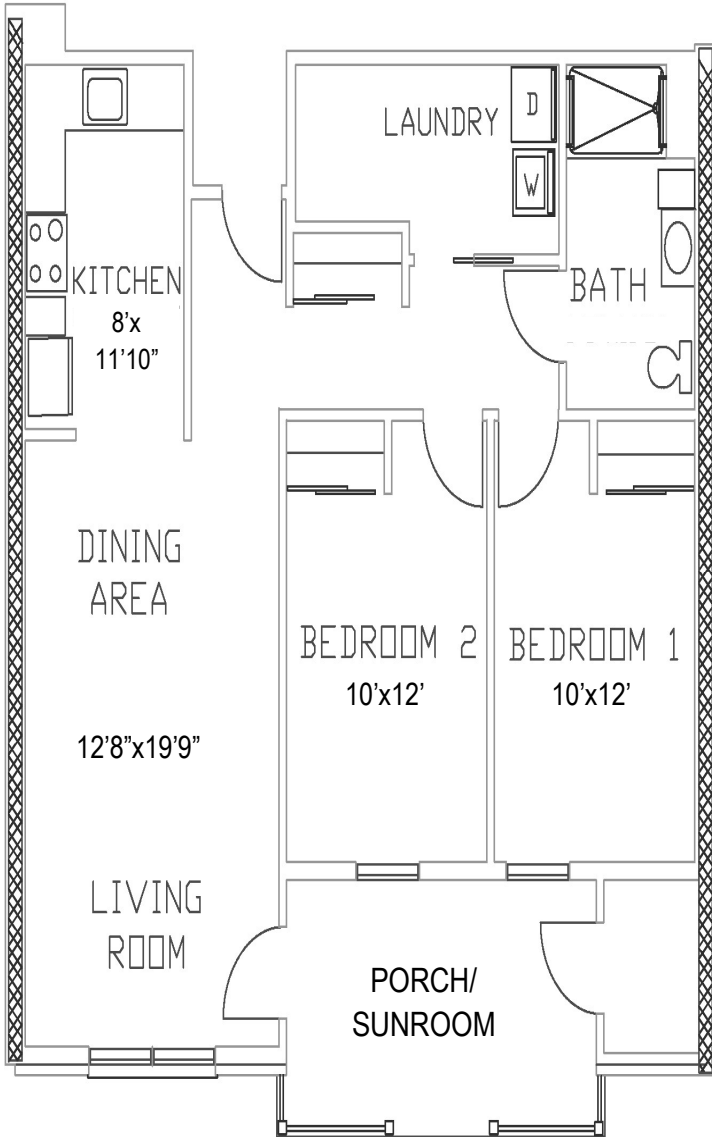
Garden  
Apartment



SANATOGA RIDGE  
COMMUNITY

# LONGWOOD II

## 2 Bedroom, 1 Bathroom



Floor plans shown are not to scale  
and indicate approximate square footage

*(Living Space 912 SF)*

## Appliances Included:

Refrigerator, Stove, Microwave, Dishwasher,  
Garbage Disposal, Washer, Dryer

## Updated Options:

Flooring, Carpeting, Lighting, Hardware,  
Countertop, Backsplash

## Entry Fee:

*75% Refund at Resale*

**\$156,300 1<sup>st</sup> Floor (porch)**

**\$163,800 2<sup>nd</sup> Floor (sunroom)**

Upgraded features on reverse side

## Monthly Maintenance & Service Fee includes:

- 24/7 On-Call Maintenance
- Property and School Taxes
- Property Insurance
- Maintenance  
(Inside, Outside, and Appliances)
- Water/Sewer
- Trash/Recycling
- Landscaping
- Snow Removal

*1 Resident: \$1,350*

*2 Residents: \$1,580*

*Fee ends when home is returned for resale.*

- Homes have forced air/natural gas heat and central air.
- Resident is responsible for utilities (heat, electric, cable, internet, & phone).
- Resident is encouraged to carry content insurance for possessions; i.e.: tv, furniture, jewelry, etc.



**SANATOGA RIDGE**  
COMMUNITY

**Upgraded Features: Longwood II**

Extra half bath          \$3,300

Upgraded features vary by home

# NOTES