

Garden  
Apartment

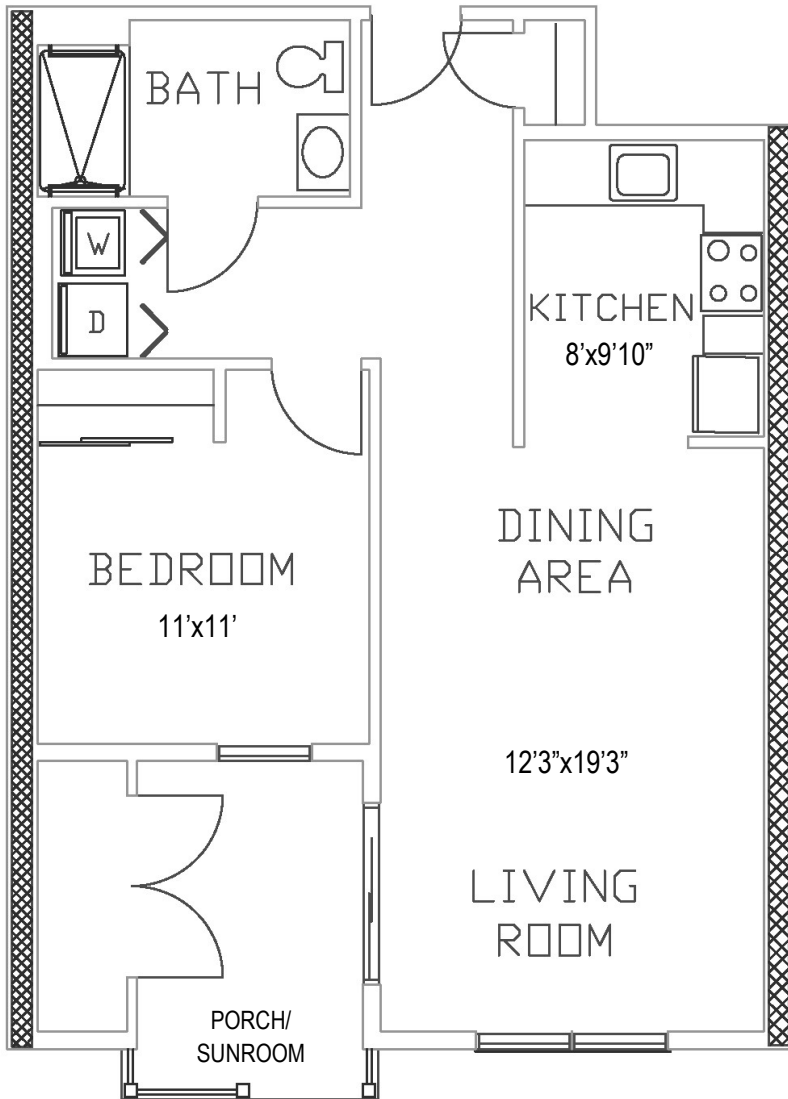


SANATOGA RIDGE  
COMMUNITY

# LONGWOOD

## 1 Bedroom, 1 Bathroom

(1<sup>st</sup> or 2<sup>nd</sup> Floor)



Floor plans shown are not to scale  
and indicate approximate square footage

(Living Space 680 SF)

## Appliances Included:

Refrigerator, Stove, Microwave, Dishwasher,  
Garbage Disposal, Washer, Dryer

## Updated Options:

Flooring, Carpeting, Lighting, Hardware,  
Countertop, Backsplash

## Entry Fee:

75% Refund at Resale

**\$141,200 1<sup>st</sup> Floor (porch)**

**\$144,900 2<sup>nd</sup> Floor (sunroom)**

## Monthly Maintenance & Service Fee includes:

- 24/7 On-Call Maintenance
- Property and School Taxes
- Property Insurance
- Maintenance  
(Inside, Outside, and Appliances)
- Water/Sewer
- Trash/Recycling
- Landscaping
- Snow Removal

1 Resident: \$1,100

2 Residents: \$1,330

*Fee ends when home is returned for resale.*

- Homes have forced air/natural gas heat and central air.
- Resident is responsible for utilities (heat, electric, cable, internet, & phone).
- Resident is encouraged to carry content insurance for possessions; i.e.: tv, furniture, jewelry, etc.



---

# NOTES