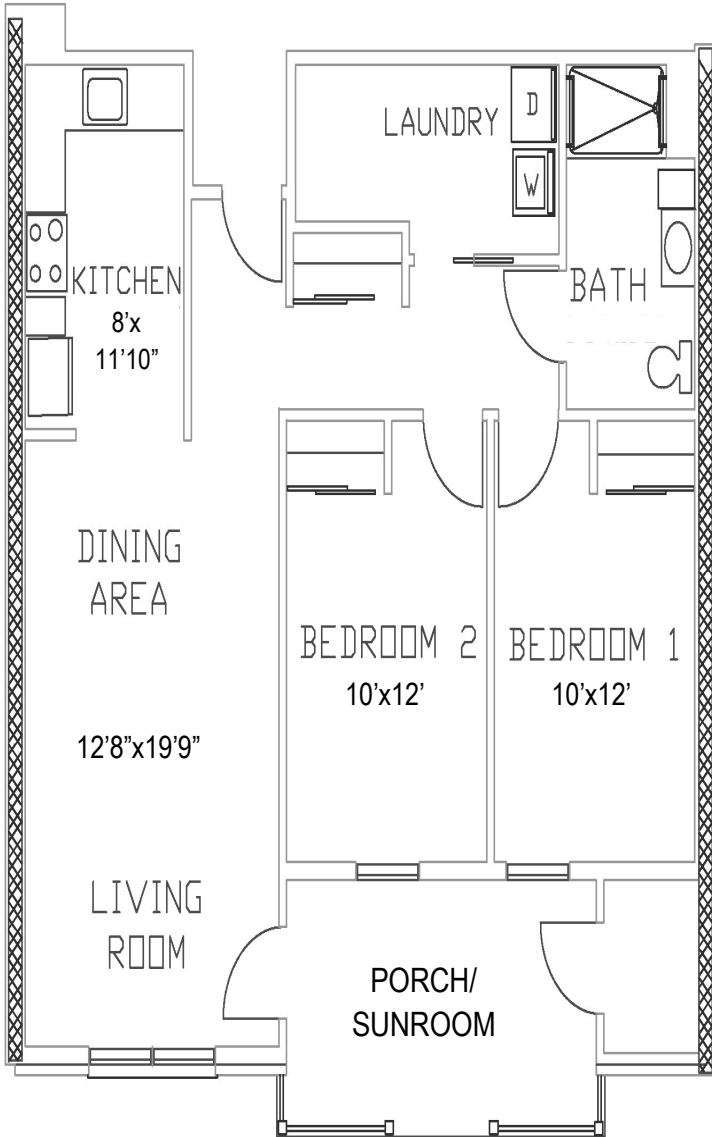




SANATOGA RIDGE
COMMUNITY

LONGWOOD II

2 Bedroom, 1 Bathroom



Floor plans shown are not to scale
and indicate approximate square footage

(Living Space 912 SF)

Appliances Included:

Refrigerator, Stove, Microwave, Dishwasher,
Washer, Dryer

Updated Options:

Flooring, Carpeting, Lighting, Hardware,
Countertop, Backsplash

Entry Fee:

75% Refund at Resale

\$156,300 1st Floor (porch)

\$163,800 2nd Floor (sunroom)

Upgraded features on reverse side

Monthly Maintenance & Service Fee includes:

- 24/7 On-Call Maintenance
- Property and School Taxes
- Property Insurance
- Maintenance
(Inside, Outside, and Appliances)
- Water/Sewer
- Trash/Recycling
- Landscaping
- Snow Removal

Monthly Maintenance
& Service Fee: \$2,300

Fee ends when home is returned for resale.

- Homes have forced air/natural gas heat and central air.
- Resident is responsible for utilities (heat, electric, cable, internet, & phone).
- Resident is encouraged to carry content insurance for possessions; i.e.: tv, furniture, jewelry, etc.

*10-2025



SANATOGA RIDGE
COMMUNITY

Upgraded Features: Longwood II

Extra half bath \$3,300

Upgraded features vary by home

NOTES