



SANATOGA RIDGE
COMMUNITY

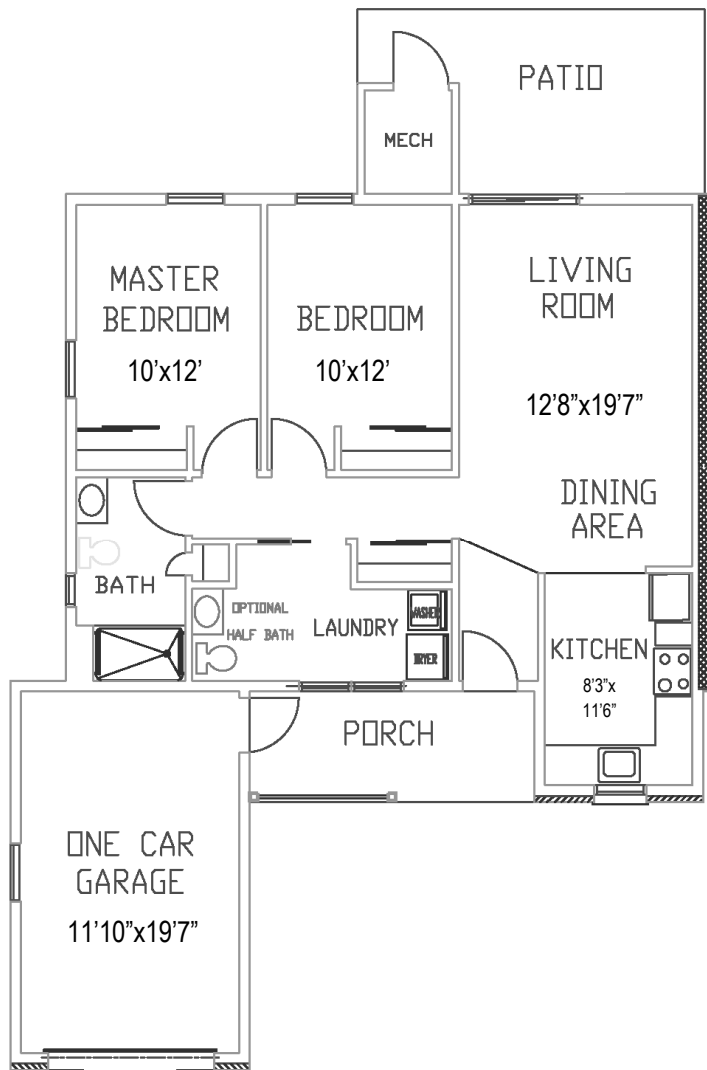
Prices Effective 2-5-19

Cottage

CREST

2 Bedroom, 1 Bathroom

(Shown with Garage and Optional 1/2 Bath)



All Homes Include:

Refrigerator, Stove, Microwave, Dishwasher,
Garbage Disposal, Washer, Dryer

Entry Fee:

NOTE: Prices are 75% Refundable Upon Sale of the Home

\$148,000 to \$166,500
Homes with Garage, add \$17,000
(Price variation dependent upon
patio enclosure, 1/2 bath, garage)

1st Person Monthly Service Fee of \$861 Includes:

(Additional \$175 for 2nd Person)

NOTE: Monthly Service Fee terminates when home is no
longer occupied and returned for resale.

- Property Taxes
- Property Insurance
- Water/Sewer
- All Maintenance
(Inside/Outside and Appliances)
- All Landscaping
- All Snow Removal
- Trash/Recycle
- Emergency 1st Response System

NOTE: Floor plans shown are not to scale and
indicate approximate square footage

2461 E. High St., Pottstown, PA 19464 | Phone: 610.326.6282 | Fax: 610.326.3142
SanatogaRidge.com